

**REGISTRATION:**

**EXISTING  
CONDITIONS AT  
STOREROOM  
#110**

POINT PLAZA  
ROUTES 356 & 68  
BUTLER, PA 16001

THIS DRAWING IS THE PROPERTY OF  
DUNN AND ASSOCIATES, INC. WHO  
CLAIMS PROPRIETARY RIGHTS IN THE  
MATERIAL DISCLOSED. IT IS ISSUED  
IN CONFIDENCE FOR DESIGN AND/OR  
CONSTRUCTION INFORMATION ONLY  
AND MAY NOT BE COPIED WITHOUT  
SPECIFIC WRITTEN PERMISSION FROM  
DUNN AND ASSOCIATES, INC.

**REVISIONS:**

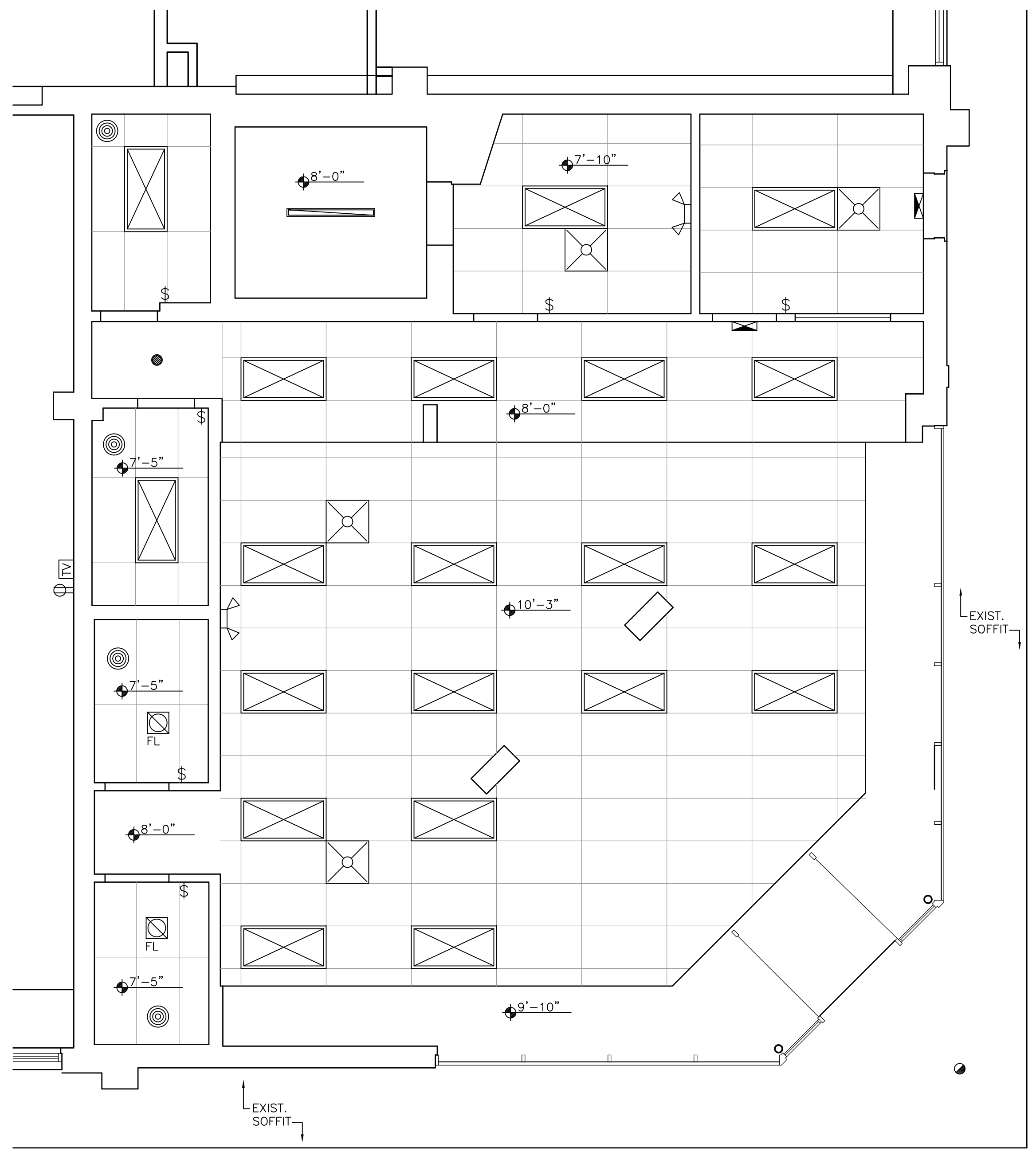
PROJECT NUMBER 1726  
DATE JULY 21, 2017  
DRAWN BY reb  
FILEure/pointplaza/#110/ax101-plans

**DRAWING TITLE:**

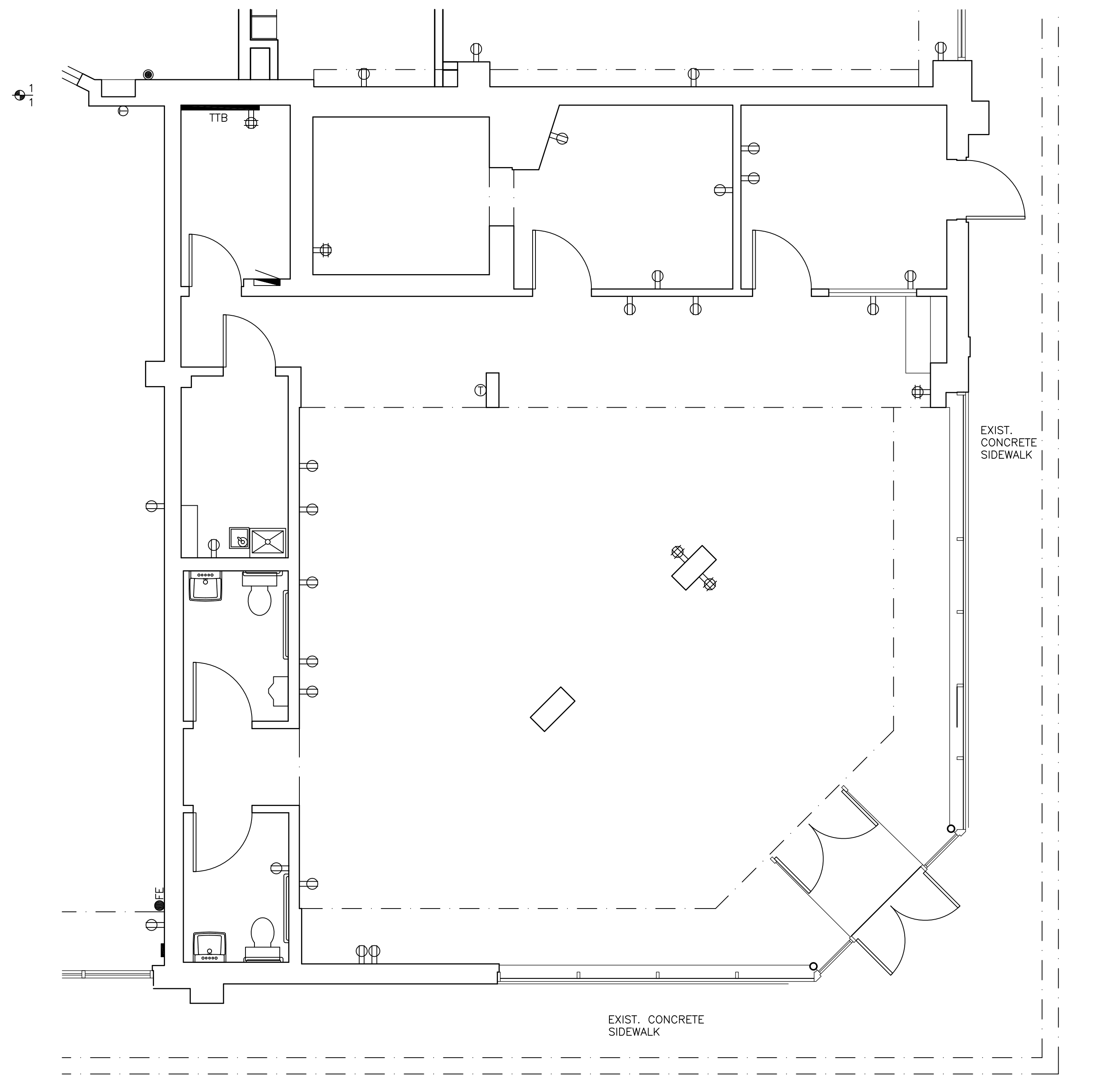
EXISTING  
FLOOR PLAN

**DRAWING NUMBER:**

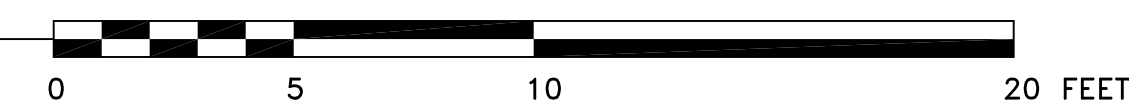
**AX1.1**  
SHEET 1 OF 1



**2 REFLECTED CEILING PLAN**  
AX1.1 1/4"=1'-0"



**1 FLOOR PLAN**  
AX1.1 1/4"=1'-0"



BLDG. NORTH

