

# NOBLE MANOR OFFICES

2500 Baldwick Road, Pittsburgh, PA 15205



**NOW LEASING:**  
**2nd Floor - 772 Square Feet**

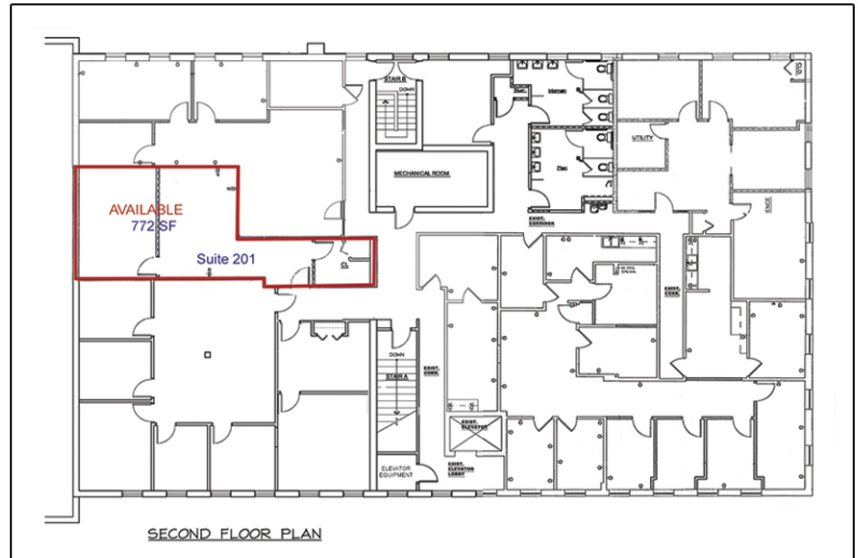
## Highlights

Located at 2500 Baldwick Road  
adjacent to the Noble Manor Shopping Center  
on Noblestown Road

Approximately one-half mile from I-279  
with easy access to the airport and downtown  
Pittsburgh

Walking distance to PNC Bank, restaurants,  
fast food, retail and personal services

Full-service leases available



[www.unionrealestate.com](http://www.unionrealestate.com)  
412-288-7800

One Oxford Centre | 301 Grant Street | Suite 1250 | Pittsburgh, PA 15219

**Joe Hodson** | Vice President - Commercial Leasing  
[jbhodson@unionrealestate.com](mailto:jbhodson@unionrealestate.com)

**Nate Draper** | Commercial Leasing  
[ndraper@unionrealestate.com](mailto:ndraper@unionrealestate.com)

PROPERTY MANAGEMENT • BROKERAGE SERVICES • THIRD-PARTY MANAGEMENT • TENANT REPRESENTATION

All information is deemed reliable, but is not guaranteed and should be independently verified. The presentation of this information is submitted subject to errors, omissions, change of price or conditions prior to lease.