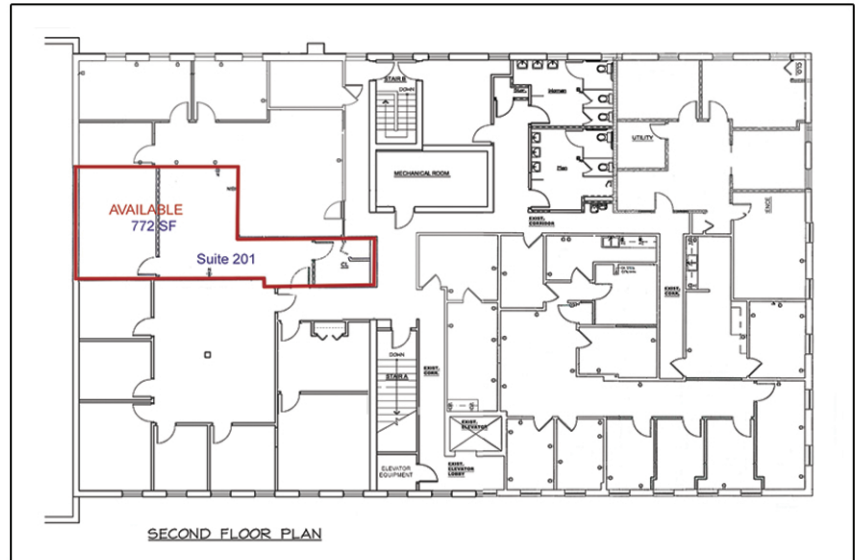


NOBLE MANOR OFFICES

2500 Baldwin Road, Pittsburgh, PA 15205



NOW LEASING:
2nd Floor - 772 Square Feet



Highlights

Located at 2500 Baldwin Road
adjacent to the Noble Manor Shopping Center
on Noblestown Road

Approximately one-half mile from I-279
with easy access to the airport and downtown
Pittsburgh

Walking distance to PNC Bank, restaurants,
fast food, retail and personal services

Full-service leases available

www.unionrealestate.com
412-288-7800

Joe Hodson | Vice President - Commercial Leasing
jbhodson@unionrealestate.com

One Oxford Centre | 301 Grant Street | Suite 1250 | Pittsburgh, PA 15219

PROPERTY MANAGEMENT • BROKERAGE SERVICES • THIRD-PARTY MANAGEMENT • TENANT REPRESENTATION

All information is deemed reliable, but is not guaranteed and should be independently verified. The presentation of this information is submitted subject to errors, omissions, change of price or conditions prior to lease.