

NOBLE MANOR OFFICES

2500 Baldwick Road, Pittsburgh, PA 15205



NOW LEASING:
2nd Floor - 346 or 772 Square Feet

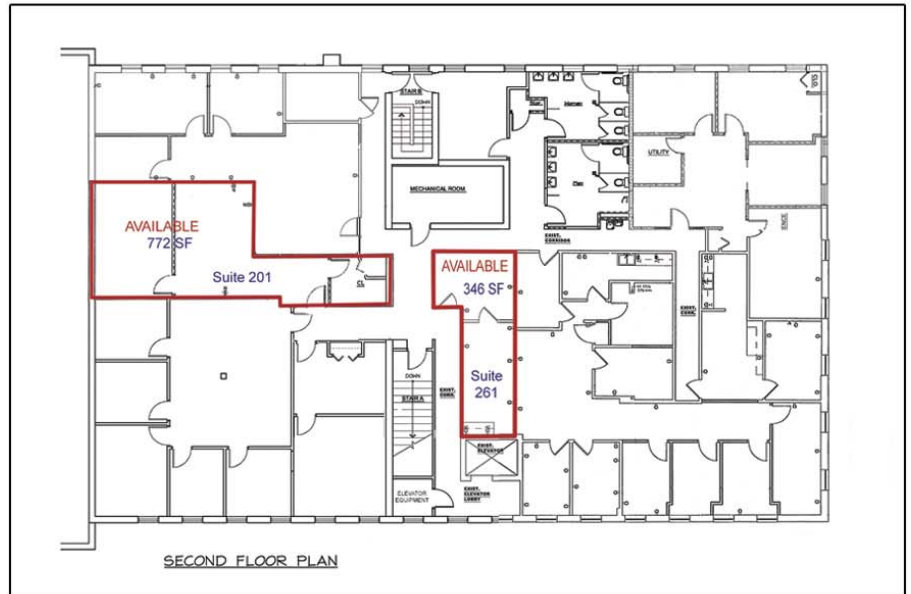
Highlights

Located at 2500 Baldwick Road adjacent to the Noble Manor Shopping Center on Noblestown Road

Approximately one-half mile from I-279 with easy access to the airport and downtown Pittsburgh

Walking distance to PNC Bank, restaurants, fast food, retail and personal services

Full-service leases available



www.unionrealestate.com
412-288-7800

One Oxford Centre | 301 Grant Street | Suite 1250 | Pittsburgh, PA 15219

Ed Kernisky | Senior Vice President
ekernisky@unionrealestate.com

Joe Hodson | Vice President - Commercial Leasing
jbhodson@unionrealestate.com

PROPERTY MANAGEMENT • BROKERAGE SERVICES • THIRD-PARTY MANAGEMENT • TENANT REPRESENTATION

All information is deemed reliable, but is not guaranteed and should be independently verified. The presentation of this information is submitted subject to errors, omissions, change of price or conditions prior to lease.