

## POINT PLAZA SHOPPING CENTER



Routes 356 & 68, Butler Township  
Butler County, PA 16001

### Highlights

Anchored by Sharp Shopper and Aaron's

Large community center with a wide variety of tenants including: PA Driver License Center, Advance Auto, Dollar Bank & many more

Traffic signal access

Easily accessible via Route 356 and 68

Property Acreage: 16.871 acres  
Total Square Footage: 174,794  
Parking Spaces: 688



[www.unionrealestate.com](http://www.unionrealestate.com)  
412-288-7800

**Ed Kernisky** | Senior Vice President  
[ekernisky@unionrealestate.com](mailto:ekernisky@unionrealestate.com)

**Joe Hodson** | Vice President - Commercial Leasing  
[jbhodson@unionrealestate.com](mailto:jbhodson@unionrealestate.com)

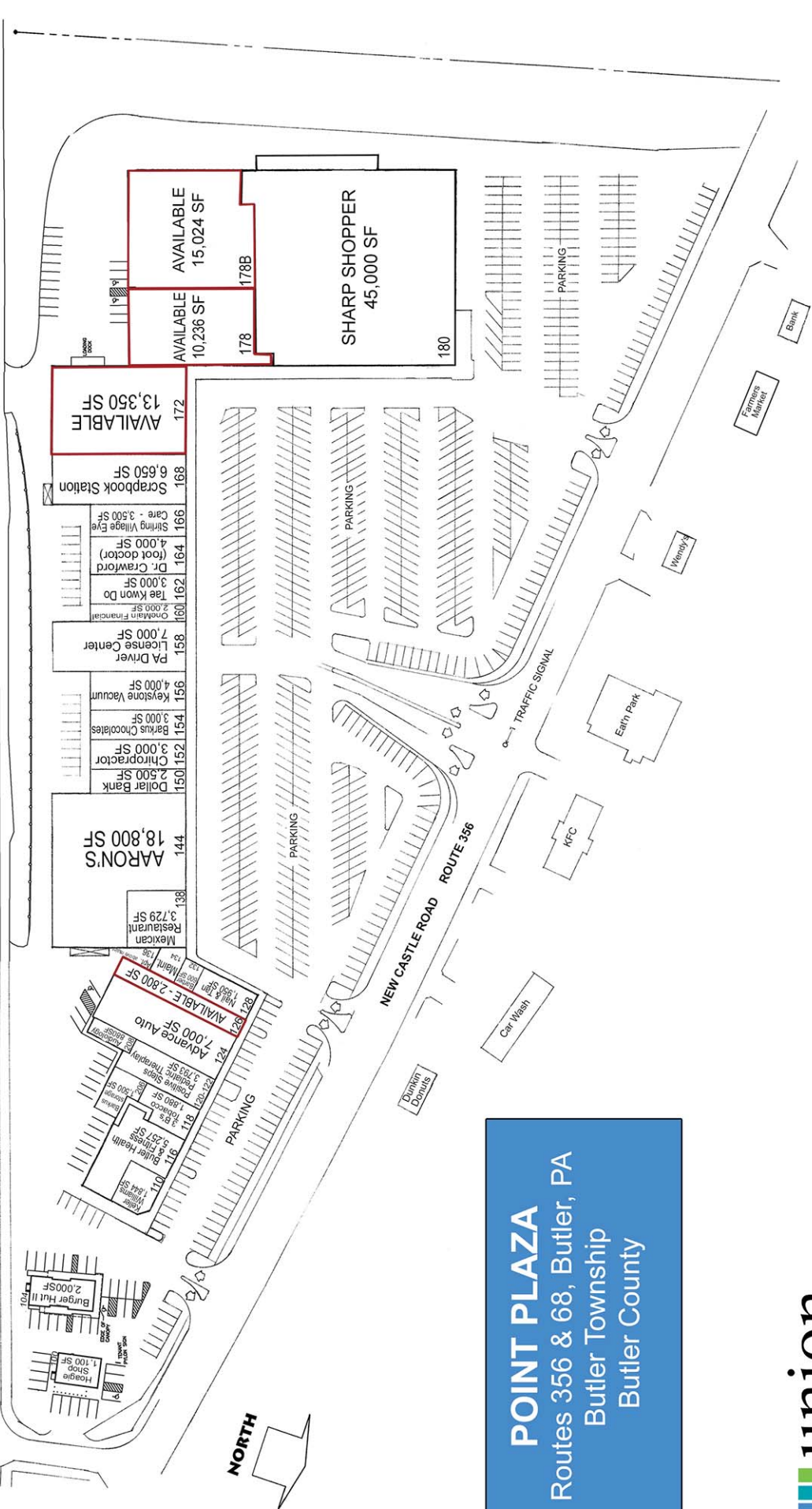
PROPERTY MANAGEMENT • BROKERAGE SERVICES • THIRD-PARTY MANAGEMENT • TENANT REPRESENTATION

All information is deemed reliable, but is not guaranteed and should be independently verified. The presentation of this information is submitted subject to errors, omissions, change of price or conditions prior to lease.

TO BUTLER

EVANS CITY ROAD ROUTE 68

TO EVANS CITY



172	AVAILABLE	13,350 SF
178	AVAILABLE	10,236 SF
178B	AVAILABLE	15,024 SF
180	SHARP SHOPPER	45,000 SF
168	Scrapbook Station	6,650 SF
166	Sitting Village Eye Care	3,500 SF
164	Dr. Crawford (root doctor)	4,000 SF
162	The Kwon Do	3,000 SF
160	Orskan Financial	2,000 SF
158	PA Driver License Center	7,000 SF
156	Keystone Vacuum	4,000 SF
154	Barikus Chocolates	3,000 SF
152	Chiropractor	3,000 SF
150	Dollar Bank	2,500 SF
144	AARON'S	18,800 SF
138	Mexican Restaurant	3,729 SF
134	Advance Auto	7,000 SF
132	AVAILABLE - 2,800 SF	
128	Advance Auto	7,000 SF
124	Posible Mens	1,800 SF
120	Posible Mens	1,800 SF
118	Posible Mens	1,800 SF
116	Posible Mens	1,800 SF
114	Posible Mens	1,800 SF
112	Posible Mens	1,800 SF
110	Posible Mens	1,800 SF
108	Posible Mens	1,800 SF
106	Posible Mens	1,800 SF
104	Posible Mens	1,800 SF
102	Posible Mens	1,800 SF
100	Posible Mens	1,800 SF
98	Posible Mens	1,800 SF
96	Posible Mens	1,800 SF
94	Posible Mens	1,800 SF
92	Posible Mens	1,800 SF
90	Posible Mens	1,800 SF
88	Posible Mens	1,800 SF
86	Posible Mens	1,800 SF
84	Posible Mens	1,800 SF
82	Posible Mens	1,800 SF
80	Posible Mens	1,800 SF
78	Posible Mens	1,800 SF
76	Posible Mens	1,800 SF
74	Posible Mens	1,800 SF
72	Posible Mens	1,800 SF
70	Posible Mens	1,800 SF
68	Posible Mens	1,800 SF
66	Posible Mens	1,800 SF
64	Posible Mens	1,800 SF
62	Posible Mens	1,800 SF
60	Posible Mens	1,800 SF
58	Posible Mens	1,800 SF
56	Posible Mens	1,800 SF
54	Posible Mens	1,800 SF
52	Posible Mens	1,800 SF
50	Posible Mens	1,800 SF
48	Posible Mens	1,800 SF
46	Posible Mens	1,800 SF
44	Posible Mens	1,800 SF
42	Posible Mens	1,800 SF
40	Posible Mens	1,800 SF
38	Posible Mens	1,800 SF
36	Posible Mens	1,800 SF
34	Posible Mens	1,800 SF
32	Posible Mens	1,800 SF
30	Posible Mens	1,800 SF
28	Posible Mens	1,800 SF
26	Posible Mens	1,800 SF
24	Posible Mens	1,800 SF
22	Posible Mens	1,800 SF
20	Posible Mens	1,800 SF
18	Posible Mens	1,800 SF
16	Posible Mens	1,800 SF
14	Posible Mens	1,800 SF
12	Posible Mens	1,800 SF
10	Posible Mens	1,800 SF
8	Posible Mens	1,800 SF
6	Posible Mens	1,800 SF
4	Posible Mens	1,800 SF
2	Posible Mens	1,800 SF

**POINT PLAZA**  
 Routes 356 & 68, Butler, PA  
 Butler Township  
 Butler County



412-288-7800 | www.unionrealestate.com